



**SCARBOROUGH  
PUBLIC SCHOOL**



**Education  
Public Schools**



# HANDBOOK

## 2020/21

[WWW.SCARBOROUGH-P.SCHOOLS.NSW.GOV.AU](http://WWW.SCARBOROUGH-P.SCHOOLS.NSW.GOV.AU)





# TABLE OF CONTENTS

WELCOME .....	3
SCHOOL OVERVIEW .....	5
GENERAL INFORMATION .....	5
TEACHING STAFF .....	5
SCHOOL ADMINISTRATIVE AND SUPPORT STAFF .....	5
COMMUNITY MEMBERS .....	5
SCHOOL HOURS .....	6
SCHOOL TERMS .....	6
ABOUT OUR SCHOOL .....	7
SCHOOL PERFORMANCE .....	8
OUR SCHOOL AIM .....	9
OUR CORE VALUES .....	9
OUR SCHOOL SONG .....	10
NATIONAL ANTHEM .....	11
COVID-19 MEASURES .....	12
SCARBOROUGH A-Z	
ABORIGINAL CULTURE AND HISTORY .....	13
ACCIDENTS AND ILLNESS AT SCHOOL .....	13
ALLERGIES (ANAPHYLAXIS) .....	14
ANNUAL REPORT .....	14
ASSEMBLIES .....	14
ATTENDANCE AT SCHOOL .....	14
BASIC NEEDS .....	15
BEFORE AND AFTER SCHOOL CARE .....	15
BEST START .....	15
BICYCLES AND SCOOTERS .....	16
BOOK CLUB .....	16
BULLYING .....	16
BUS PASSES/OPAL CARDS .....	16
BUSHFIRE PLAN .....	16
CANTEEN .....	17
CARNIVALS .....	17
CHECK-IN ASSESSMENTS (YEARS 3 AND 5) .....	17
CHILDREN'S WELLBEING AND SAFETY .....	18
COMMUNICATION WITH SCHOOL COMMUNITY .....	18
COMPUTER TECHNOLOGY .....	18
CONCEPTUAL LEARNING .....	19
COUNSELLOR .....	19
DISABILITY STRATEGY .....	19
DOGS .....	19
EMERGENCY CONTACT .....	20
ENROLMENT .....	20
EVACUATION .....	20



EXCURSIONS.....	21
EXTRA-CURRICULAR ACTIVITIES.....	21
FAMILY MATTERS.....	21
HEAD LICE.....	22
HEALTH PLANS.....	22
HIGH POTENTIAL AND GIFTED STUDENTS .....	22
HOMEWORK .....	22
INCLUSIVE EDUCATION .....	23
KEY LEARNING AREAS (KLA'S) .....	24
KITCHEN GARDEN PROGRAM.....	26
LIBRARY .....	26
LOST PROPERTY.....	26
MEDICINES AT SCHOOL.....	26
MAKERSPACE AND PORTABLE KITCHEN.....	26
MONEY.....	27
NAPLAN .....	27
NEWSLETTER.....	28
ORIENTATION DAYS.....	28
PARENTS AND CITIZENS ASSOCIATION (P&C).....	28
PARENT PARTICIPATION .....	29
PEER MENTORING.....	29
PROGRESSIVE ACHIEVEMENT TESTS (PAT) .....	29
PLAYGROUND.....	30
PRESENTATION ASSEMBLY.....	30
PUBLIC SPEAKING & DEBATING .....	30
READING AT HOME .....	30
REPETITION.....	30
REPORTING TO PARENTS .....	30
ROAD SAFETY.....	30
SAFETY BRIEFING.....	31
SCHOOL DEVELOPMENT DAYS.....	32
SCHOOL IMPROVEMENT PLAN.....	32
SCHOOL PHOTOGRAPHS.....	32
SCRIPTURE/ETHICS.....	32
SMOKING .....	32
SOCIAL MEDIA.....	32
SPORT.....	33
STUDENT LEADERSHIP .....	33
STUDENT WELLBEING.....	33
SUN SAFETY .....	34
TELL THEM FROM ME SURVEY .....	34
UNIFORMS.....	34
WEBSITE.....	34
WET OR ADVERSE WEATHER.....	34
VOLUNTARY SCHOOL COBTRIBUTIONS.....	35
ART: SCARBOROUGH ART SHOW.....	26



## APPENDIX

APPENDIX A: ONLINE ENROLMENT .....	37
APPENDIX B: UNIFORM ORDERS AND PRICING .....	38
APPENDIX C: SCHOOL BAG ESSENTIALS .....	39
APPENDIX D: SCHOOL ENEWS .....	40
APPENDIX E: SAMPLE CANTEEN MENU.....	41
APPENDIX F: EVERYDAY MATHS HUB.....	42



## WELCOME

With the Illawarra escarpment as a backdrop, Scarborough Public School sits perched on a headland overlooking the Tasman Sea. It is a small heritage listed school located in the northern suburbs of Wollongong, catering for approximately 65 students and its supportive local community. The atmosphere of the school is warm and welcoming, a mood which is reinforced by the historical charm of the building and the attractive physical environment bordered by trees and gardens.

### A SMALL SCHOOL WITH BIG IDEAS

At Scarborough Public School, we are proud to be a small school with big ideas and high expectations. In our welcoming and supportive community, no student gets lost in the crowd. We provide differentiated learning programs, aligned to the curriculum, to ensure all students are challenged, independent learners who are working towards clear learning goals. Our expectations for learning are high for every student and reflect the aims and goals of both our community and the students themselves. Our mixed-age classes challenge students to extend and develop themselves as teachers, not just learners. All our students are leaders in their own right. We have built a reputation as a school that is inclusive of difference and encourages learners to build on their individual strengths and interests. Our staff are highly trained and passionate about making a difference for your child and their learning.

### LEARNING THROUGH MAKING

We pride ourselves on being a school where creativity is nurtured and learners are encouraged and motivated to explore and make, whether it be through hands-on science programs, robotics or making clay sculptures in our renowned art and literacy program. We





provide the tools, strategies and motivation for our learners to become true problem finders and solvers. Our teachers are highly motivated to provide modern, relevant and continually evolving teaching programs that are supported by current research, programs that cater for future-focussed learners. In this new world, our focus is developing skills that allow our students to be active digital citizens, to find, locate and critically analyse information to construct new knowledge. Our annual Art Show, held here every October, is a highly respected and anticipated local event.

## OUTSTANDING LITERACY & NUMERACY PROGRAMS

We believe that the foundations of learning, literacy and numeracy should be embedded in all learning and we achieve this through innovative and integrated programming. We have a very strong core literacy and numeracy focus, aligned to the NSW Syllabuses for the Australian Curriculum. Our maths programs are inquiry-based and encourage students to solve a range of open-ended maths problems using a wide range of maths skills and knowledge. Our literacy programs target the specific learning needs of each student, ensuring that every learner is provided with the support and guidance they need to take the next step in their learning. Performance of our students in the literacy aspects of NAPLAN are well above state average in most areas, and are improving annually. Improving numeracy outcomes is our current focus.

## DEVELOPING COLLABORATIVE LEARNERS

We believe in taking down the walls between learners, whether it is through our use of composite classes, whole school programs or collaboration across our local Community of Schools and further afield. Our classrooms are open to the community through our online presence, providing genuine purpose and audience for our learners. Students can utilise a range of online tools such as Google Classroom to share ideas, communicate and collaborate in the cloud. Leadership programs such as the Student Representative Council foster a sense of responsibility and leadership within the school. Our students believe their voice is heard and that they can make a difference to the community. The effective, safe and ethical use of these tools forms a core part of our program to develop ethical and safe digital citizens.

## ABORIGINAL EDUCATION

Since 2018 we have worked hard at developing the effective integration of Aboriginal and Torres Strait History and Culture into learning outcomes across every syllabus. We believe that as a school with just one Aboriginal student, we still have a responsibility to broaden awareness of our indigenous history and develop stronger links with the local Aboriginal community. This process has included consultation with local community on the development of our school plan through the Northern Illawarra Aboriginal Educational Consultative Group (NIAECG), targeted staff professional learning and innovative projects like our recent Composition Workshop, writing our own song based on the local story of the Five Islands. Our work has been recognised by the local community and was showcased on the NSW Education Week website.



Chris Hopkins  
*Principal*



## GENERAL SCHOOL INFORMATION

School Name	Scarborough Public School
Address	371 – 381 Lawrence Hargrave Drive, Scarborough NSW 2515
Phone	02 4267 2153
Fax	02 4268 1461
Email	<a href="mailto:scarboroug-p.school@det.nsw.edu.au">scarboroug-p.school@det.nsw.edu.au</a>
Website	<a href="http://www.scarboroug-p.schools.nsw.gov.au">www.scarboroug-p.schools.nsw.gov.au</a>
Facebook	<a href="https://www.facebook.com/scarboroughpublicschool">www.facebook.com/scarboroughpublicschool</a>
Twitter & Instagram	@scarborough_ps

### TEACHING STAFF (2020)

Principal	Chris Hopkins
Burri Burri (K/1)	Bria Fowler
Gadhu (2/3)	Genevieve Smith
Mudjingaal (4/5/6)	Emma Hutchinson
Learning & Support	Hailie Morgan
Art & Literacy Program	Gabrielle Adamik
Teacher Librarian	Chris Hopkins
Kitchen Garden	Chris Hopkins

### SCHOOL ADMINISTRATIVE AND SUPPORT STAFF

School Administration Managers	Rose Stewart & Natalie Rankin
School Administration Officer	Natalie Rankin
School Learning Support Officers	Shannon Stanbridge Bridget Iffland
General Assistant	Rob Donald
School Counsellor	Phil McKenzie

### COMMUNITY MEMBERS

P&C President	Jo Gullo
P&C Vice President	Quirine Van Nispen
P&C Secretary	Cinnamon Lee
P&C Treasurer	Michael Webb
Uniform Coordinator	Michael Webb



## SCHOOL HOURS

Staff on Duty	8:30am
School Commences	9:00am
Lunch	11:00am to 11:40am
Recess	1.40pm to 2:00pm
School Dismissal	2:45pm

*Variations to recess and lunch times may occur occasionally to suit a planned school activity.*

## SCHOOL TERMS

<b>2020</b>	Term 1	Tuesday 28 January	Thursday 9 April
	Term 2	Monday 27 April	Friday 3 July
	Term 3	Monday 20 July	Friday 25 September
	Term 4	Monday 12 October	Friday 18 December
<b>2021</b>	Term 1	Friday 29 January	Thursday 1 April
	Term 2	Tuesday 20 April	Friday 25 June
	Term 3	Tuesday 13 July	Friday 17 September
	Term 4	Tuesday 5 October	Thursday 16 December

**Kindergarten students start on the first day of term 1.**

*Please note that the dates above represent the days that students are expected to be on site. Teacher training days have been removed.*



Art and Literacy Program guerrilla art



## ABOUT OUR SCHOOL

Since 1878, after mining and timber-getting pursuits spawned early European settlement of the area, Scarborough Public School has been an integral part of the small communities of Scarborough, Wombarra and Clifton.

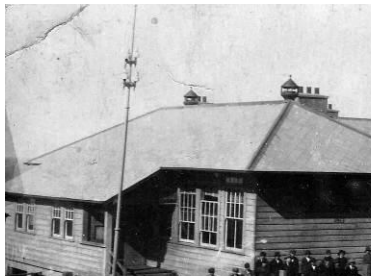
Due to concerns over ground stability and safe pupil access, the original school at Clifton was moved to its current site in 1914.

Situated approximately 20 kilometres north of Wollongong on the cliff atop the Pacific Ocean the school has a strong community focus.

Officially heritage listed, the school is essentially one building comprising four classrooms, general purpose room, staffroom and offices. In 2011 a library was constructed and in 2016, we converted our old computer lab into a Maker Space.



Original School at Clifton



Our school song reflects our unique position with the escarpment as the backdrop to the expansive ocean vista. We pride ourselves on our creative focus and the environmental education opportunities we provide for all students.

While there is a strong commitment to the explicit teaching of literacy and numeracy it is the special emphasis we place upon the integrated, project-based learning that sets us apart from the other local schools. We are proud of our achievements in this area and where we are heading in the future. Our reputation is a direct result of the partnership which exists between the school and community. The widely acclaimed and much anticipated Scarborough Art Show is a wonderful example of this strong local partnership between the school and its community.



Scarborough Public School in 1942, including Croker Island Mission evacuees





# SCHOOL PERFORMANCE

Every four years, our school undertakes an External Validation (EV) process where we evaluate our practice against a number of different domains and elements in the School Excellence Framework. Evidence submitted by our team is reviewed by an external panel, providing valuable discussion for our staff and informing our forward planning.

## Results of our 2020 External Evaluation Process:

EXCELLING	SUSTAINING AND GROWING	DELIVERING
<p><b>Learning Culture</b> In schools that excel, the school culture is strongly focused on learning, the building of educational aspiration and ongoing performance improvement throughout the school community.</p>	<p><b>Wellbeing</b> In schools that excel, there is a strategic and planned approach to develop whole school wellbeing processes that support the wellbeing of all students so they can connect, succeed, thrive and learn.</p>	<p><i>We are beyond delivering in all areas</i></p>
<p><b>Curriculum</b> In schools that excel, an integrated approach to quality teaching, curriculum planning and delivery, and assessment promotes learning excellence and responsiveness in meeting the needs of all students.</p>	<p><b>Assessment</b> In schools that excel, consistent school-wide practices for assessment are used to monitor, plan and report on student learning across the curriculum. Formative assessment is integrated into teaching practice in every classroom, confirming that students learn what is taught.</p>	
<p><b>Learning and Development</b> In schools that excel, professional learning is aligned with the school plan, and its impact on the quality of teaching and student learning outcomes is evaluated. There are explicit systems for collaboration and feedback to sustain quality teaching practice.</p>	<p><b>Reporting</b> In schools that excel, reporting that is clear, timely and accurate provides information that supports further progress and achievement for all student learning across the curriculum.</p>	
	<p><b>Student Performance Measures</b> In schools that excel, students consistently perform at high levels on external and internal school performance measures and equity gaps are closing.</p>	
<p><b>School Planning, Implementation and Reporting</b> In schools that excel, the school plan is at the core of continuous improvement efforts, with the school's vision and strategic directions evident in its activities. The plan is well-conceived, effectively implemented and effects improvement.</p>	<p><b>Effective Classroom Practice</b> In schools that excel, all teachers are committed to identifying, understanding and implementing the most effective explicit teaching methods, with the highest priority given to evidence-based teaching strategies.</p>	
	<p><b>Data Skills and Use</b> In schools that excel, student assessment data is regularly used school-wide to identify student achievements and progress, in order to reflect on teaching effectiveness and inform future school directions.</p>	
<p><b>School Resources</b> In schools that excel, resources are strategically used to achieve improved student outcomes and high quality service delivery.</p>	<p><b>Professional Standards</b> In schools that excel, all staff demonstrate personal responsibility for maintaining and developing their professional standards. Professional Standards are a reference point for whole school reflection and improvement.</p>	
<p><b>Management Practices and processes</b> In schools that excel, administrative systems, structures and processes underpin ongoing school improvement and the professional effectiveness of all school members.</p>	<p><b>Educational Leadership</b> In schools that excel, the principal is the primary instructional leader in the school. The principal and school leadership team model instructional leadership and support a culture of high expectations and community engagement, resulting in sustained and measureable whole school improvement.</p>	

**Key: Learning Domain (Blue); Teaching Domain (Purple); Leading Domain (Red)**

<https://education.nsw.gov.au/teaching-and-learning/school-excellence-and-accountability/sef-evidence-guide/resources/about-sef>



## SCHOOL AIMS

We aim for students to become:

- Self-directed, motivated and independent learners
- Creative problem finders and solvers
- Active and ethical global citizens

## CORE VALUES & RULES

We are

- Safe
- Respectful
- Active learners
- (and not afraid to make mistakes)





## SCHOOL SONG

On the cliff above the ocean,  
Our school welcomes us each day,  
For learning, fun and laughter,  
For sport and art and play,  
Whales and dolphins passing by,  
Pelicans gliding in the sky,  
As we all work together  
Our hearts and spirits fly.

### *Chorus*

*Scarborough School, Scarborough School,  
Between the mountains and the sea.  
Scarborough School where friendships  
grow  
Amongst the gardens and the trees*

### *Chorus*

Scarborough School, Scarborough  
School,  
Between the mountains and the sea.  
Scarborough School where  
friendships grow  
Amongst the gardens and the trees

Scarborough School Scarborough School,  
We're all growing strong and true.

Happy days above the waves  
At Scarborough Public School

Happy days above the waves  
At Scarborough Public School

Learning new ideas,  
Learning how to live,  
Caring for each other  
Knowing how to give.  
Good teachers there to help us,  
Parents sharing too,  
Happy days above the waves,  
At Scarborough Public School.





## NATIONAL ANTHEM

Australians all let us rejoice,  
For we are young and free;  
We've golden soil and wealth for toil;  
Our home is girt by sea;  
Our land abounds in nature's gifts  
Of beauty rich and rare;  
In history's page, let every stage  
Advance Australia Fair.  
In joyful strains then let us sing,  
Advance Australia Fair.



Beneath our radiant Southern Cross  
We'll toil with hearts and hands;  
To make this Commonwealth of ours  
Renowned of all the lands;  
For those who've come across the seas  
We've boundless plains to share;  
With courage let us all combine  
To Advance Australia Fair.  
In joyful strains then let us sing,  
Advance Australia Fair.

### In Dharawal:

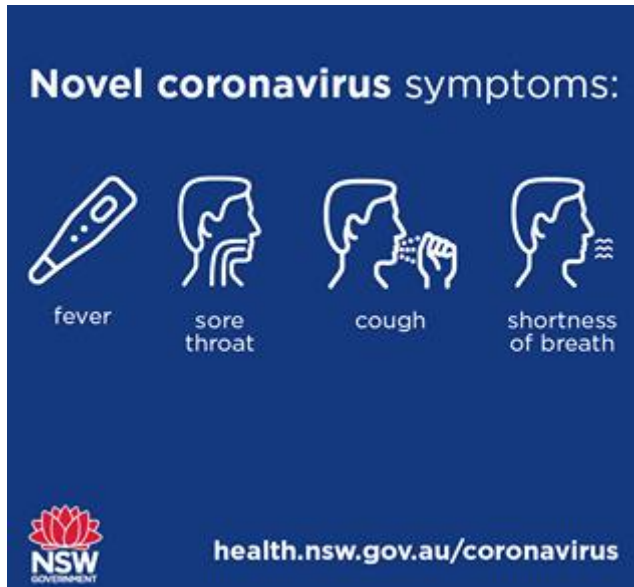
nyini Australiagal bugjari garibara  
nyini budjari buriga  
bugjari bamul yaraaga mari walaba  
balmulga mari walanmirang  
bamul merong mari kaban walaba  
badजारang waratah  
yanamuru Australiagal yanumauru Australiagal  
yana budjari Australiagal  
nyini bayala gawuwi bayala gawuwi  
yana budjari Australiagal







## COVID-19 MEASURES



As a result of the COVID-19 pandemic, we have a number of restrictions and procedures in place to ensure the safety of our students, staff and the wider community. Please note that these restrictions are regularly changing based on the latest health advice. Current NSW Department of Education COVID-19 advice for families can be found here:

<https://education.nsw.gov.au/covid-19/advice-for-families>

We are committed to ensuring that Scarborough Public School remains a safe and healthy place to learn for all students. Hygiene measures in place at our school include:

- Hand sanitiser dispensers in all rooms
- Regular reminders for handwashing (20 seconds) for all students, particularly those in Kindergarten and Year 1
- Additional daytime cleaning of high-frequency areas
- Students showing any common COVID-19 symptoms must stay at home
- COVID-19 QR code check-in at the front office
- Temporary closure of our shared water bubblers
- Restrictions on adults entering the school grounds
- Adapted assemblies using Zoom
- Adapted excursion and event planning procedures

We will communicate changing restrictions to all parents through School Enews and our fortnightly newsletter.

If you have any questions or concerns about COVID-19 or our procedures, please feel free to contact us directly.



# SCHOOL A-Z

## ABORIGINAL CULTURE AND HISTORY

- It is a curriculum requirement that Aboriginal history and culture is meaningfully embedded across all key learning areas. As a small school with a very small cohort of Aboriginal students, we believe that this is more important than ever. We have a responsibility to work with our local Aboriginal Community through our strong relationship with the Northern Illawarra Aboriginal Education Consultative Group (NIAECG) to ensure every student understands how Aboriginal history and culture informs our daily lives.
- We are committed to ensuring all teachers are effectively trained in cultural awareness practices through professional learning like Connecting to Country
- The new 2020-2030 Partnership Agreement between the AECG and the NSW Department of Education can be viewed here:  
<https://www.aecg.nsw.edu.au/about/partnership-agreement/>

## ACCIDENTS AND ILLNESS AT SCHOOL

- **Students with any common COVID-19 symptoms (fever, sore throat, cough or shortness of breath) must not attend school and must have a COVID test before returning (sighted by the school). Alternatively, students should remain home for 10 days and be symptom-free before returning.**
- In the case of minor accidents or illness students will be attended to at the office.
- In more serious cases parents or emergency contacts will be notified
- An ambulance may be called if deemed necessary
- All steps will be taken to ensure the well-being of all students
- Common illnesses and disease information is available from  
<http://www.health.nsw.gov.au/Infectious/factsheets/Pages/childhood.aspx>
- **Immunisation** - In an effort to improve childhood immunisation rates the NSW Government has amended The Public Health Act (1991). **The Public Health Act requires you to provide documented evidence of the immunisation status of all children enrolling in schools, pre-schools and child-care centres from 1994.**
- Parents have the right of choice regarding immunisation, however in the event of an outbreak of a vaccine preventable disease; non-immunised children will be required to remain at home for the duration of the outbreak.
- Immunisation Certificates can only be issued by
  - Doctors (General Practitioner)
  - Senior Health Surveyor of the Local Council
  - Medical Officer of Health-Local Health Unit
  - Community Health Staff
- The child's immunisation status will be assessed when the child presents for the school entry booster and an Immunisation Certificate should be issued by the Health Professional at that time.
- If no proof is provided, the child will be presumed as being un-immunised.



## ALLERGIES (ANAPHYLAXIS)

- We have students who suffer severe allergic (anaphylactic) reactions to ground and tree nut-based foods. **Please avoid bringing foods containing these products to school wherever possible.** This does not include foods labelled 'may contain trace of nuts'
- All students identified with allergies may require a Health Plan form signed by a medical practitioner.
- Students identified as anaphylactic are required to provide an Epi-pen to the office for use at school along with their ASCIA Action Plan. Two general use Epi-pens are also kept on site for emergencies.
- All our staff are trained to respond to anaphylactic emergencies.

## ANNUAL REPORT

- Our Annual Report provides an overview of our performance for the previous year, measured against our current School Plan, and shows the impact of our strategies to improve learning outcomes. The report also shows the benefits of equity funding to all students and celebrates achievements throughout the year. This document plays an important role in ensuring accountability to the school community and can be viewed here: <https://scarboroug-p.schools.nsw.gov.au/about-our-school/school-planning-and-reporting.html>

## ASSEMBLIES

- Whole school assemblies are held on Wednesdays in **weeks 5 and 10**. Parents are welcome to attend. During the COVID-19 pandemic, virtual assemblies have been held using Zoom.

## ATTENDANCE AT SCHOOL

- Children **are required by law** to attend school each day that it is open. Should your child be absent for any reason, a written explanation, signed by the parent or carer must be provided for school record purposes upon the child's return. An explanation can also be submitted digitally through our School Enews App.
- In the case of absences due to an infectious disease the school needs to be notified immediately.
- For longer absences, a week or more, other than due to illness, approval must be sought from the Principal prior to absence (exemption forms available at the office).
- Exemptions for longer absences can only be provided in cases where students are involved in elite arts or sporting events or working within the entertainment industry for approved activities. **Exemptions cannot be provided for family holidays.** Parents are encouraged to book overseas holidays during school holiday times.
- If you have a need to bring your child to school late or withdraw him/her before 2:45pm you are required to report to the office, and only for approved reasons.



# EVERY DAY COUNTS

A day here or there doesn't seem like much, but...

When your child misses just...	That equals...	Which is...	And therefore, from Kindy to Year 12, that is...	This means that the best your child can achieve is...
1 day each fortnight	20 days per year	4 weeks per year	Nearly 1 ½ years of learning	Equal to finishing Year 11
1 day a week	40 days per year	8 weeks per year	Over 2 ½ years of learning	Equal to finishing Year 10
2 days a week	80 days per year	16 weeks per year	Over 5 years of learning	Equal to finishing Year 7
3 days a week	120 days per year	24 weeks per year	Nearly 8 years of learning	Equal to finishing Year 4

## BASIC NEEDS

- All clothing and personal items need to be labelled
- Scarborough School hat
- Raincoat or appropriate wet weather equipment
- Lunch box, preferably one which carries 'nude food' (minimise packaging)
- Watertight drink bottle
- *Painting shirt (long enough to cover clothes completely, long sleeves)*
- Library bag and Home Reader bag
- Pencils, pens, erasers, coloured pencils, glue stick, scissors, ruler (Yr 3-6)
- Additional items as requested by the class teachers
- School backpack (optional)

## BEFORE AND AFTER SCHOOL CARE

- **Wild Care: 7.30-9am and 2.30-5.30pm**  
- Based at Coledale Public School (0419 693 863 - Carmel)
- **Fun Club @ Big Fat Smile: 7-9am and 3-6pm**  
- Based at Austinmer Public School (0439 420 633 - Amelia)
- Students travel to and from before- and after-school care on the number 2 route bus. There is a staff member at the bus stop at each end to put them on the bus, and ensure they get off safely upon arrival.
- Both programs also offer vacation care.

## BEST START

- The *Best Start* initiative is an ongoing commitment in all government schools. It is intended to ensure that all students are on track in their literacy and numeracy learning by Year 3.
- The Best Start Kindergarten Assessment helps teachers identify the literacy and numeracy knowledge and skills that each child brings to school as they enter Kindergarten, to inform the development of quality teaching and learning programs.
- Best Start assessments will be carried out at the beginning of term 1 when your child begins Kindergarten.





## BICYCLES AND SCOOTERS

- Children must wear helmets by law.
- It is recommended that only students from Years 3-6 ride bikes to school without an adult.
- Students must walk their bikes from the Southern bus stop to the school gate.
- On reaching the school, the bike or scooter is to be walked to, and secured in the bicycle rack.

## BOOK CLUB

- Our Scholastic Book Club is run by a parent volunteer. This is a great opportunity to encourage students to read. The school receives reward vouchers from sales and uses these to purchase new books for the library.
- Payments are now made online using a credit card at [www.scholastic.com.au/loop](http://www.scholastic.com.au/loop)

## BULLYING

- Bullying is not tolerated at Scarborough PS. If you become aware of any issues related to bullying or harassment, including cyber-bullying, then contact the school immediately so appropriate actions can be taken.

## BUS PASSES/OPAL CARDS

- The School Opal card gives eligible students free or discounted travel between home and school on public transport.
- The School Opal card replaces the old paper School Student Transport Scheme (SSTS) travel pass.
- Applications are made online at [www.transportnsw.info/school-students](http://www.transportnsw.info/school-students)
- Visit the website for more information about entitlements.

## BUSHFIRE PLAN

- Our school is identified as being at risk from bushfire, primarily from embers falling from the escarpment and smoke from nearby fires. In the event of a bushfire incident, we have a comprehensive Bushfire Plan, prepared in consultation with the Rural Fire Service.
- A parent's guide to our bushfire plan can be downloaded online from <https://scarborough-p.schools.nsw.gov.au/supporting-our-students/bushfire-plan.html> We encourage all parents to familiarise themselves with our procedures.





## CANTEEN

- Our parent-operated canteen now runs fortnightly on Thursdays with a sandwich/wrap menu and a variety of meal deals
- Menu choices reflect our focus on healthy eating and non-processed foods

*We are committed to supporting student health and well-being by providing healthier food and drink options while they are at school.*

*Our school meets the  
NSW Healthy School Canteen Strategy.*

### What does this mean?

- At least 75% EVERYDAY and no more than 25% OCCASIONAL foods and drinks are sold
- All OCCASIONAL items have a Health Star Rating of at least 3.5
- Only EVERYDAY items are displayed, promoted and advertised
- No sugary drinks are sold

*Thank you for supporting our school canteen!*



## CARNIVALS

- There are 3 carnivals a year, which are usually held in collaboration with our fellow small schools, Otford and Waterfall:
  - **Swimming** held in Term 1
  - **Cross Country** held in late Term 1 or early Term 2
  - **Athletics** held in late Term 2 or early Term 3

## CHECK-IN ASSESSMENTS (YEARS 3 AND 5)

- The Year 3 and Year 5 Literacy and Numeracy Check-in assessments were introduced by the NSW Department of Education in 2020 and have proven very useful for our teachers to evaluate student progress and growth. These untimed assessments provide instant feedback that allows us to evaluate the success of our teaching practice, and to determine specific areas of focus for future teaching. More information on the new assessments is available here:  
<https://education.nsw.gov.au/teaching-and-learning/curriculum/literacy-and-numeracy/assessment-resources/check-in-assessment>



## CHILDREN'S WELLBEING AND SAFETY

- When collecting students after school please be prompt. If delayed, please contact the school.
- If there is to be a change in the usual routine, always notify the class teacher in writing.
- Avoid ringing the school just prior to the 2:45 dismissal time as message may not get passed on in time.
- Discuss with your child issues relating to 'Stranger Danger' and 'Road Safety' regularly.

## COMMUNICATION WITH SCHOOL COMMUNITY

- **Our mailing list: School eNews.** Subscribe for email updates on our website and download the free app – search for Scarborough Public School in the Android or Apple app stores.
- School website [www.scarboroug-p.schools.nsw.gov.au](http://www.scarboroug-p.schools.nsw.gov.au)
- Facebook [www.facebook.com/scarboroughpublicschool](http://www.facebook.com/scarboroughpublicschool)
- Instagram photo updates @scarborough\_ps
- Fortnightly newsletter *Whale Tales* distributed via School eNews and Facebook.
- P&C news and information section of the school newsletter.
- Formal reporting processes.
- Informal discussions and talks.
- Formal interviews. Times can be arranged by contacting the office.
- Written notes or letters to individuals.
- SMS in emergency situations.
- Telephone.
- School and teacher email.
- Surveys such as the *Tell them from Me* survey



## COMPUTER TECHNOLOGY

- **We are a 1:1 device school** with every student having access to a device.
- All students have access to a high performance secure wireless computer network with Internet access.
- All students have their own email address accessible from home via the DEC portal
- Every classroom has a large screen TV
- All classrooms have modern notebook (PC and Chromebook) computers for easy access.
- All classrooms have Apple TV for mirroring iPads on the whiteboard.
- iPads and notebooks are regularly used to support innovative and engaging learning, not for games or passive entertainment.



## CONCEPTUAL LEARNING

- Over the last 6 years, our approach to teaching the curriculum at Scarborough Public School has changed dramatically as we move towards an integrated ‘big picture thinking’ approach that incorporates project-based learning and conceptual thinking.
- Each term, we select a new concept as the over-arching focus and align our learning across the curriculum to that concept. For example, in 2019 we focussed on Prejudice (Term 1), Perspectives (Term 2), Perfection (Term 3) and Energy (Term 4).
- Integrated classroom projects and units of work are developed to help students gain a better understanding of these concepts from different perspectives and subject areas.
- In 2021, our concepts will be **Precision** (Term 1), **Flexibility** (Term 2), **Transformation** (Term 3) and **Systems** (Term 4).

## COUNSELLOR

- A school counsellor attends the school for half a day every fortnight to provide support to students and staff. If parents are concerned about the performance and/or behaviour of their child they may request a referral through their classroom teacher.

## DISABILITY STRATEGY

- In accordance with the new NSW Department of Education’s Disability Strategy, we are committed to providing children with a disability, and their families with a welcoming, supportive and inclusive learning environment.
- We believe that every student deserves careful differentiation for their individual learning needs and do not take a ‘one-size-fits-all’ approach. We will work closely with students, parents and external providers to develop appropriate adjustments that ensure students can learn to their fullest capacity. We see collaboration as the key to success.
- Our school newsletter is produced in a digital format that is accessible to visually impaired readers
- **If your child has a disability or specific needs of any kind, please contact us as soon as possible** so we can work with you to apply for funding (if applicable) and put supports and effective transitions in place for starting school at Scarborough.
- The NSW Department of Education’s Disability Strategy is available here: <https://education.nsw.gov.au/teaching-and-learning/disability-learning-and-support/our-disability-strategy/disability-strategy>

## DOGS

- We love dogs, however they must not to be brought onto the school grounds without permission.





## EMERGENCY CONTACT

- Parents need to give the name and phone number of a neighbour/friend or relative living in the area or a suburb close by, who is willing to come and collect the child at short notice if parents cannot be contacted..
- It is essential that the designated person has appropriate transport.
- It is most important that parents inform the school of changes in phone numbers, address, place of work, emergency contacts etc. so that our records can be kept up to date.
- **Change your address details easily using the Scarborough Public School App.**

## ENROLMENT

Our current enrolment policy can be found on our website at

<https://scarboroug-p.schools.nsw.gov.au/about-our-school/enrolment.html>

### Kindergarten –

- All children who reach the age of five years on or before 31 July may be enrolled at the beginning of the school year.
- Prior to their enrolment a Full Birth Certificate, an Immunisation History Statement, proof of student's residential address and copies of any applicable family law or court orders must be produced.
- Online enrolment applications are now possible - instructions are on page 37

### Children transferring to Scarborough Public School -

- Parents who wish to transfer their children from another school and live within the boundary of Scarborough Public School should provide a Pupil Transfer Certificate from the previous school (public school only)
- If 'non-local', parents must first complete a non-local enrolment application form and enrolment will be considered in reference to the Scarborough PS Enrolment Policy.

### Children transferring from Scarborough Public School -

- Parents of children moving from this school to another within the state should contact the office with a view to obtaining a Pupil Transfer Certificate which is to be handed to the school to which they are transferring.

## EVACUATION

- There are three procedures to be followed depending on the type of threat the school faces.
  - Lock down
  - Evacuation
  - Lock out
  - Bushfire lockdown (in the library)
- Evacuation procedures are regularly practised.
- The evacuation plan is shown on page 31
- A safety briefing brochure is available from the office with all our evacuation procedures. We recommend you familiarise yourself and your child with these procedures.



## EXCURSIONS

- During the year it is usual for classes to participate in excursions or in-school activities to support class programs and the curriculum.
- Parents will be informed by letter giving all details including cost, method of transport and other organisational information.
- Parents will be requested to return a signed permission note as an acknowledgement that they have received the letter and wish their child to attend or participate.
- It is essential that this permission note is returned promptly and completed fully.
- If there is a cost involved parents should enclose the money in an envelope with the permission note and return it to the office or as directed on the note.

## EXTRA-CURRICULAR ACTIVITIES

- Students are afforded access to a range of exciting and challenging extra-curricular activities which cater for a range of different learning styles. These activities vary but often include:
  - Chess
  - Dance
  - Choir
  - Debating
  - Tournament of Minds
  - Sporting Schools
  - Coding and robotics
- If your child has a particular interest and would like to establish a new activity, please contact their classroom teacher. New activities will be considered based on available staff expertise and demand from students.

## FAMILY MATTERS

- The school needs to be made aware of major family changes such as illness or separation of parents so the situation can be handled sensitively and appropriate support given.
- Custody issues should be discussed with the Principal.
- In complex cases, court documents may be need to be viewed to confirm arrangements
- All information is treated confidentially



Decorating our playground during the Art and Literacy program



## HEAD LICE

- Head Lice are unfortunately very common.
- Please check hair regularly and treat if found
- We recommend a treatment during every school holidays so everyone returns to school with lice-free hair.
- More information is available from the NSW Health website:  
<https://www.health.nsw.gov.au/environment/headlice/Pages/default.aspx>

## HEALTH PLANS

- For students with high risk health issues e.g. asthma, anaphylaxis, a health plan must be completed. Contact the Office for details.
- Health information is taken with teachers on all excursions, along with a first aid kit and relevant equipment such as Epi-pens and asthma inhalers.

## HIGH POTENTIAL & GIFTED STUDENTS

- The NSW Department of Education High Potential and Gifted Education Policy promotes engagement and challenge for every student, regardless of background, in every school across **intellectual, creative, social-emotional** and **physical** domains. It supports every student to achieve their educational potential, through talent development opportunities and differentiated teaching and learning practices to ensure that their specific learning and wellbeing needs are met. This is an area of focus for Scarborough Public School. The policy can be viewed at:  
<https://education.nsw.gov.au/teaching-and-learning/high-potential-and-gifted-education/about-the-policy/high-potential-and-gifted-education-policy>
- We are currently working to develop better systems to identify and challenge students who are gifted, or show high potential across the four domains

## HOMEWORK

- It is our belief that the best homework you can give a child is to read with them regularly
- Homework in various forms is set by all teacher but we try and avoid rote learning and revision, which research shows is ineffective
- Student involvement in extra-curricular activities (sports, Scouts, music, dance) is encouraged
- Please discuss any homework issues with your child's teacher

## INCLUSIVE EDUCATION

- Inclusive education in NSW is defined as “*all students, regardless of disability, ethnicity, socio-economic status, nationality, language, gender, sexual orientation or faith, can access and fully participate in learning, alongside their similar aged peers, supported by reasonable adjustments and teaching strategies tailored to meet their individual needs. Inclusion is embedded in all aspects of school life, and is supported by culture, policies and everyday practices*”.
- In 2020, the NSW Department of Education released an Inclusive Education Statement which informs our practice as a school. We are strong advocates for principals of inclusive practice by focusing on:
  - Student agency and self-determination
  - Parent and carer inclusion
  - Social and cultural inclusion
  - Curriculum inclusion
  - Workforce capability for inclusion
  - System inclusion





## KEY LEARNING AREAS (KLA'S)

- The school provides a broad range curriculum with emphasis on the acquisition of basic skills. Recognising that all children are different, the school endeavours to provide learning experiences which cater for a range of abilities.
- We endeavour to provide meaningful learning activities that relate directly to the real world and integrate learning across all KLAs. We implement a Project Based Learning (PBL) approach to ensure students have the opportunity to learn key problem-solving and critical thinking skills.

**There are six Key Learning Areas (KLA's) in the Primary Curriculum;**

### English

- Speaking and listening
- Writing and representing
- Reading and viewing
- Spelling
- Handwriting and digital technologies
- Grammar, punctuation & vocabulary
- Thinking imaginatively & creatively
- Expressing themselves

### History

- Continuity and change
- Cause and effect
- Perspectives
- Empathetic understanding
- Significance
- Contestability
- Comprehension
- Analysis and use of sources
- Research
- Explanation and communication

### Science & Technology

- Working Scientifically
- Design and Production
- Material World
- Physical World
- Earth and Space
- Digital Technologies

### Mathematics

- Number and algebra
- Measurement and geometry
- Statistics and probability

### Geography

- Place
- Space
- Environment
- Interconnection
- Scale
- Sustainability
- Change

### Back to School

I'm very happy to go back to school to see my friends. I can't wait to play soccer again. I will do more maths and play football again too. I will eat lunch and recess with my friends.

By Jax







### Personal Development, Health, Physical Education

- Health, wellbeing and relationships
- Movement, skill and performance
- Healthy, safe and active lifestyles

### Creative Arts

- Visual Arts
- Dance
- Drama
- Music



For more information on the new NSW Syllabuses for the Australian Curriculum, please visit <https://educationstandards.nsw.edu.au/wps/portal/nesa/parents/parent-guide>





## KITCHEN GARDEN PROGRAM

- 2020 was the first year of our involvement in the Stephanie Alexander Kitchen Garden Program, which has been a great success. We have invested in a new portable kitchen which students use to cook a range of healthy meals using some of the produce from our garden.
- Students follow a carefully planned curriculum to develop positive food habits through fun, hands on learning.
- The curriculum focusses on sustainable gardening practices to bring fresh food from the garden to the plate
- **Parent volunteers are essential for the success of this program. If you would like to volunteer, please contact the office.**



## LIBRARY

- Our library has an outstanding collection of quality fiction and non-fiction books
- We have a qualified Teacher-Librarian on staff
- Students are required to have a cloth library bag in order to borrow books
- Books must be returned or renewed every week on library day

## LOST PROPERTY

- Lost property items are held in the red bin in the hallway.
- Parents are most welcome to look for lost items.
- Clearly labelled clothing and personal items will greatly aid the return of lost items.

## MEDICINES AT SCHOOL

- All medicines, with the exception of Ventolin inhalers must be taken to the office.
- For the administration of medicines at school, a written request outlining the need and instructions to administer the medicine needs to be sent to the office.

## MAKERSPACE, ART ROOM & PORTABLE KITCHEN

- Over the past five years, we have refurbished our old computer lab and multi-purpose space into a combined makerspace and art room. This has been part of our Project Based Learning approach and to encourage students to design, make and experiment.



- The MakerSpace includes essential design equipment such as a 3D printer; programmable robots; Meccano; Lego Technic; construction materials and tools; fabric and electrical components such as light bulbs, wire, batteries and motors.
- The space was updated in 2020 with a range of portable kitchen units to support our kitchen garden program.



## MONEY

- We prefer payment for school excursions, text books and events through our secure online payment portal, on the front page of our website (Make a Payment button).
- For cash payments, please make sure money is enclosed in a sealed envelope, marked clearly with the child's name, class and purpose.
- Notes and money can be placed in the metal notes letterbox outside the office

## NAPLAN

- NAPLAN assessments are conducted in Term 2 each year for Years 3 and 5 using the new online, adaptive version of the assessments (except for Year 3 writing)
- These assessments cover basic Literacy and Numeracy skills
- Parents will receive a written report on their child's achievement
- We do not teach to the test. Students cover the content required during their day-to-day learning at school
- NAPLAN is primarily a diagnostic tool for schools and data is used to determine areas of improvement within the school.



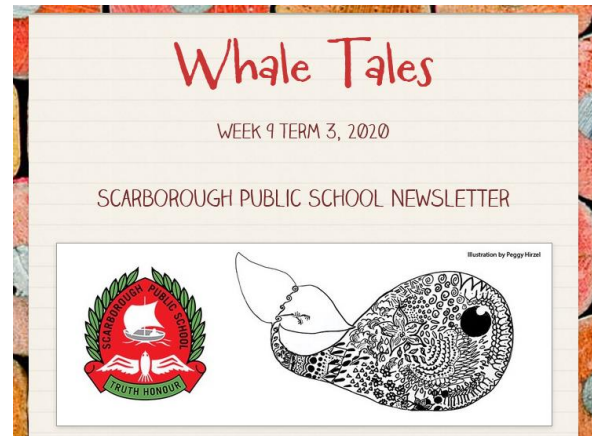
Students presenting at the Developing Future Leaders Program at Bulli High School





## NEWSLETTER

- The School Newsletter is published fortnightly and contains important information for parents.
- Featured in each issue is the Principal's Report, Calendar outlining dates to remember for future excursions, activities and social events as well as educational and other issues related to the school.
- The newsletter is available only through subscription to School eNews via the school website. The School eNews app is free to download.



## ORIENTATION DAYS

- Kindergarten Orientation Days are held during Term 4 for pre-schoolers starting school the following year.
- High School Orientation Days occur during the year for Year 5 students and for Year 6 students.

## PARENT & CITIZENS ASSOCIATION (P&C)

Scarborough Public School is fortunate to have very strong community support -

- Parent & Citizens Association (P&C) Meetings are usually held on the **second Tuesday of the month**, 7.00pm in the Mudgingaal classroom.
- The school community have a strong voice and collaborative role in school decision-making.
- The P&C works hard to raise vital funds for the school.
- All parents are urged to attend meetings.



Art and Literacy Program guerrilla art



## PARENT PARTICIPATION

- The school is the centre of our learning community and so, community and parental involvement in creating a strong partnership is strongly encouraged. Ways you can get involved include:
  - Being trained to be a reading or MultiLit tutor
  - Supervising homework
  - Treating activities at home as educational opportunities
  - Kitchen Garden Program
  - Involvement in Class Activities - assisting with reading & maths
  - Excursions.
  - Student-led conferences.
  - Orientation Days - Kindergarten & Year 6 entry to High School.
  - Involvement on School Committees.
  - School Canteen
  - P&C Meetings.
  - Sport - Carnivals, as officials.
  - Run an iCreate Art workshop in term 3
- If you have skills or knowledge that you feel would benefit our school, particularly in Science, Technology, Engineering, Art or Maths, please let us know!

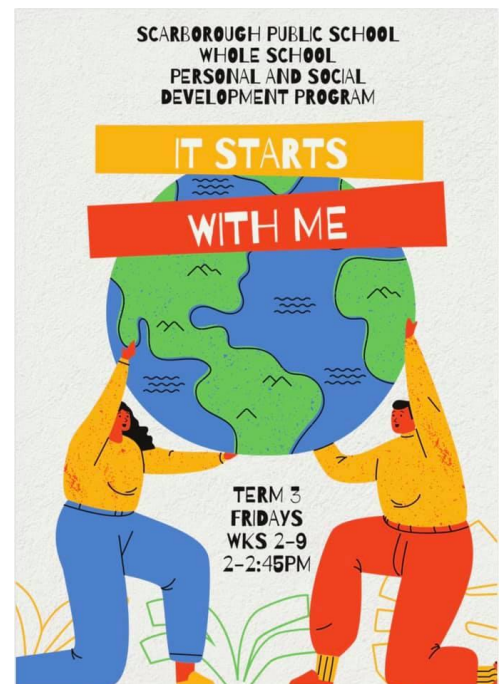


## PEER MENTORING

- Since 2019, we have been delivering a new whole school personal and social development program called *It Starts with Me*.
- This peer mentoring program is designed and run by our Year 6 leaders. The aim of this program is develop greater socio-emotional skills and awareness in our students, as well as providing a genuine opportunity for our Year 6 students to lead.

## PROGRESSIVE ACHIEVEMENT TESTS (PAT)

- We use the Progressive Achievement Tests (PAT), designed by ACER as an ongoing measure of student progress and growth
- Tests in Reading, Grammar and Punctuation, Maths and Science are administered every 6 months (mostly in the older years) and help us determine areas of focus and how best to support our students







## PLAYGROUND

- Our new playground was designed as a collaboration between our students and local Landscape Architects, Taylor Brammer
- The natural playground was constructed in 2019 and includes balance beams, a tunnel, monkey bars, slide, climbing lobs, construction area, sandpit and garden beds



## PRESENTATION ASSEMBLY

- This assembly is held in the last weeks of Term 4 each year. School, Academic, Sporting and Cultural achievements are recognised.
- Parents are invited to attend.

## PUBLIC SPEAKING / DEBATING

- Students participate in the COS public speaking and debating competition in Term 3. In 2019, year 6 student Ava was State Champion in the NSW Multicultural Perspectives Public Speaking Competition.
- Students have to present an impromptu and a prepared speech.

## READING AT HOME

- Reading at home is an important part of each child's journey towards literacy.
- Parent encouragement and support for 'Home Reading' programs and modelling of reading for **pleasure** cannot be underestimated.

## REPETITION

- Decisions relating to the repetition of students will be made as a result of discussion between the Class Teacher, Principal, the School Counsellor and Parents.

## REPORTING TO PARENTS

- Written reports are forwarded to parents at the end of Semester 1 (June) and Semester 2 (December).
- If at any time parents are concerned about their child's progress we encourage an interview with the classroom teacher. Interviews can be arranged with the class teacher through the office or by contacting the class teacher. Teachers are very busy just prior to class and at the end of the day. Unexpected interviews at this time may not result in the most desired outcomes.

## ROAD SAFETY

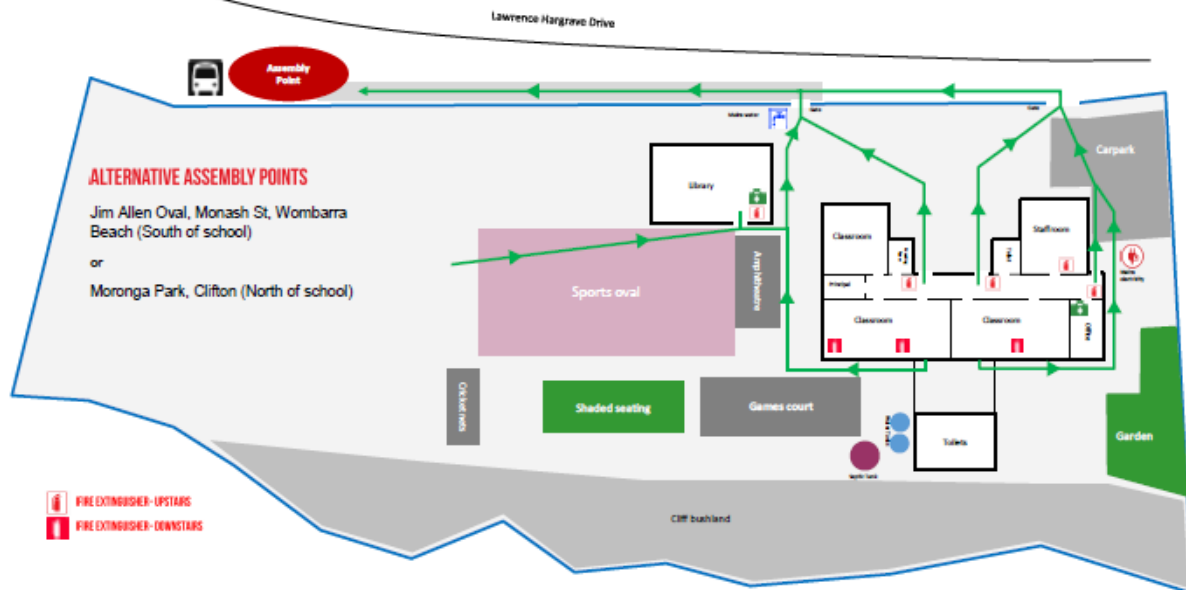
- Parents are requested to observe the parking and speed regulations that operate around our school. **Please don't use the driveway for u-turning.**
- If dropping off / picking up from a car, please remember to park on the school side of the road and obey parking signs.
- Teach your child basic road safety, and set a good example yourself.



## SAFETY BRIEFING

- We encourage all parents and community members to familiarise themselves with our safety guidelines and evacuation procedures.

# EVACUATION PROCEDURES



## EVACUATION

### REPEATED AND CONTINUOUS RISING TONE

- Students follow teacher directions to make an orderly exit from the building or playground and proceed to the Emergency Assembly Point
- Teacher/Admin staff to collect Evacuation Kit on leaving room.
- At the Emergency Assembly Point teachers mark rolls and advise Principal/delegate of any students or adults unaccounted for.  
**Under no circumstance is anyone permitted to return to building.**
- The Principal/delegate or the appropriate emergency authority will advise when it is safe to return to the building (the safe signal is activated) or whether additional measures are needed.

## LOCKDOWN

### CONTINUOUSLY RISING BEEP

- All students stop what they are doing.
  - If outside, students are to go to the nearest occupied classroom
  - Classes that are in other rooms e.g. MPR or MakerSpace remain where they are.
- All access doors and windows are closed and locked if possible; blinds pulled if possible.
- Students, staff and visitors move away from the windows and doors to safest, least visible part of the room or building.
- Teacher to mark class rolls  
**If a student or adult is unaccounted for, the office is to be contacted where possible.**
- The Principal/delegate or the appropriate emergency authority will advise when it is safe to resume normal routines

**LOCKOUT** As above except the Principal/ delegate will lock security gates.



## SCHOOL DEVELOPMENT DAYS

- 5 days a year are 'pupil free days' where staff undertakes professional learning programs and planning activities. Dates are confirmed annually but generally the first day of terms 1, 2 and 3 and two days at the end of term 4. **In 2021, the Department has decided to have 2 School Development Days at the beginning of term 1 and just 1 at the end of term 4.**

## SCHOOL PHOTOGRAPHS

- Each school year, students are photographed individually, and in their class groups by professional photographers.
- Parents are under no obligation to purchase photographs
- MSP Photography are our current school photo provider and offer an online ordering service



## SCHOOL IMPROVEMENT PLAN (SIP)

- 2021 sees the beginning of our new school plan, now called the School Improvement Plan (SIP). Our school is undertaking a thorough situational analysis to determine specific areas of focus for the next planning cycle, from 2021-2024.
- The NSW Department of Education now provides sets performance targets for reading, numeracy, attendance and wellbeing based on an average of our school's previous results. These form the focus of our first strategic direction.
- The second strategic direction (focus) is locally designed and developed by our staff, and is aligned to the School Excellence Framework. We will undertake community consultation around this process.

## SCRIPTURE / ETHICS

- Religious instruction and Ethics classes are conducted by a group of volunteers every Tuesday afternoon.
- We currently host Protestant and Catholic scripture programs and Ethics for students in Kindergarten and Years 3-6. We are currently seeking volunteers to host ethics. Please contact the office if you are interested.
- Supervision is provided for those students who do not attend these classes.

## SMOKING

- It is a Department requirement that school buildings and playgrounds are **smoke free**

## SOCIAL MEDIA

- Scarborough PS are very active on a range of social media channels, including Facebook, Instagram, Twitter and YouTube
- All classes use the SeeSaw app to share their learning with parents. Ask your classroom teacher for the link to access your child's class.
- We encourage parents and carers to like our Facebook page and receive our regular updates from classrooms. These include sharing work, success and research that informs our teaching.
- No photos are ever posted online without prior permission.

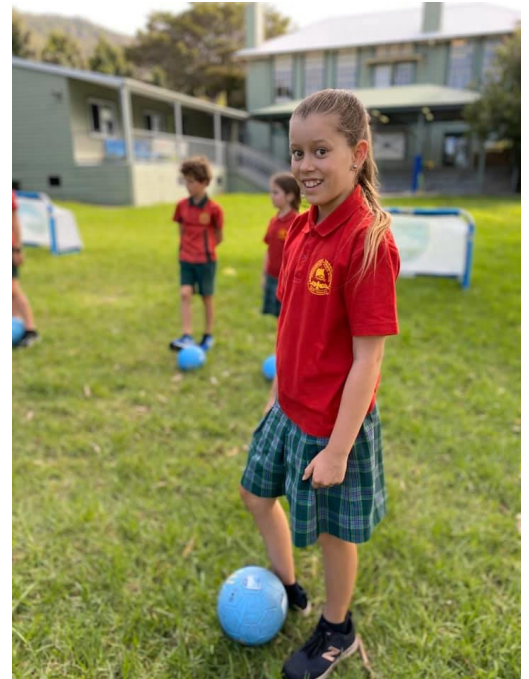


## SPORT

- All children are expected to wear the Scarborough sports uniform when taking part in Sporting activities.
- School Swimming, Cross Country and Athletics Carnivals are conducted each year with the best swimmers and runners representing the school in Zone, Region and State Carnivals.
- Teams may take part in NSWPSA knockout competitions and/or Gala Days.

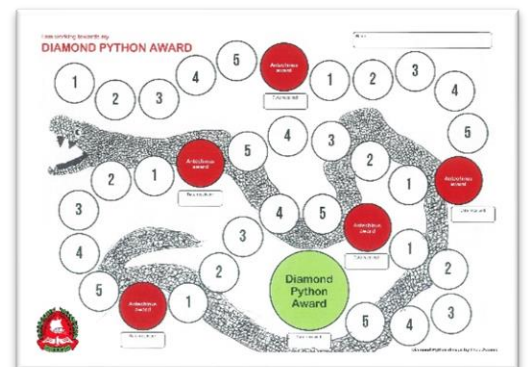
## STUDENT LEADERSHIP

- The Student Representative Council involves 1 elected student from each year and is led by four year 6 students.
- Meetings are held regularly and assist with the overall governance of the school.
- Senior School Representatives, year 6 students, coordinate the school assemblies, raise and lower the flags and help run a number of school initiatives.
- Every effort is made to provide leadership opportunities for all students.



## STUDENT WELLBEING

- The Student Welfare Policy endeavours to support the social, personal and emotional needs of our students by:
  - providing a school and classroom that is conducive to learning.
  - ensuring a safe and secure environment,
  - encouraging appropriate forms of behaviour,
- Restorative justice practices forms the basis for resolution of welfare issues.
- The School Counsellor and other teachers with special expertise support children, teachers and parents.
- Students receive special awards to reinforce and encourage positive attitudes, behaviour and the school core values.
- When necessary, liaison with parents, School Counsellor and Principal may be required so that an appropriate plan or program can be undertaken.
- **We are in the process of developing a new Student Wellbeing Plan that mental health and trauma-informed practices we have learned from training in the [Berry Street Education Model](#) and [BeYou Framework](#). We hope to finalise our new plan by the end of 2021.**







## SUN SAFETY

- Students are required to wear their school hat when involved in outdoor activities.
- Use of a sunscreen is encouraged when outdoors.



**PROTECT YOURSELF IN FIVE WAYS FROM SKIN CANCER**

## TELL THEM FROM ME SURVEY

- The anonymous *Tell Them from Me* Survey is undertaken twice a year for students in years 4-6 and provides students with an opportunity to give us feedback on their wellbeing, engagement and the quality of their academic experiences. This important data informs our own practice and school plan
- Parents also undertake the survey in Semester 2, sharing views on the quality of learning, communication and accessibility of the school, amongst many things

## UNIFORMS

- All students are expected to wear the Scarborough Public School uniform and sport uniform. *See Appendix B for details*
- All students are to wear a school hat when outdoors.
- An optional Scarborough school backpack is available from the uniform shop
- The only jewellery to be worn at school is a watch, ear studs or sleepers.

### ***The Uniform Shop***

- Is situated in the art room adjacent to the canteen and is open on Thursday mornings, between 8.30am and 9.30am for sales and orders. Orders can also be placed online: <https://scarboroug-p.schools.nsw.gov.au/about-our-school/uniform>

## WEBSITE

- Our website provides key information about the school and updates from the Department of Education
- View the gallery for photos of student learning and activities
- Up-to-date calendar with details of all upcoming events
- <http://www.scarboroug-p.schools.gov.edu.au>

## WET OR ADVERSE WEATHER

- It would be appreciated if students arrive at school as close to 9am as possible.
- Before school, at lunch and at recess use of classrooms may be necessary depending on conditions and circumstances.







## VOLUNTARY SCHOOL CONTRIBUTION

- At the beginning of every year, we will ask our parents to make a Voluntary School Contribution to enhance the delivery of educational and sporting programs
- The contribution ranges from approximately \$50 for one child to \$80 for a family, which is significantly lower than many other schools
- This contribution is entirely voluntary, but is encouraged
- Our Voluntary School Contribution adheres to the Voluntary School Contribution Code of Practice
- **Your contribution makes a significant difference – thank you!**



# SCARBOROUGH ART SHOW



## ART: A VIBRANT EXHIBITION

Contemporary, traditional, abstract and figurative, the Scarborough Art Show is a celebration of diversity. Local painters, printmakers, photographers and sculptors are showcased next to those from Sydney and beyond.

## CRAFT: BEAUTIFUL AND INTRIGUING

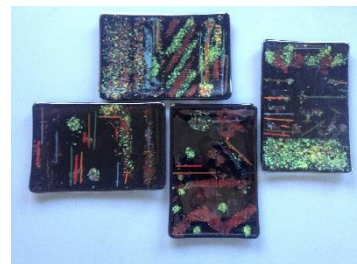
From textiles and jewellery to ceramics and glass, the Craft gallery offers a collection of unique, hand crafted pieces from the Illawarra, Sydney and beyond.

## KIDS: ARTSPARK, ICREATE, JUNIORS AND PRESCHOOLS

**Artspark** is a new initiative for Scarborough Art Show. The aim is to encourage and develop artistic abilities in children of our community, and give them an opportunity to showcase their work.



**iCreate** -our internal arts program. Students have learned basket weaving, pom pom creatures, drawing, marbling, glass work, matchstick designs and clay work. All artworks will be on display at the show.



## A DATE FOR YOUR CALENDAR...FRIDAY 1 OCTOBER 2021 6-9PM

Opening night of Scarborough Art Show is an exciting event in the social and cultural calendar of the Illawarra. Opening night is the perfect opportunity to view the exhibition, have first pick of the work and meet the artists.

Visit our website for full details: <http://www.scarboroughartshow.com/>



## APPENDIX A: ONLINE ENROLMENT

As of 2020, students can now be enrolled at Scarborough Public School using the new NSW Department of Education's online system.

### [Visit our school website and select the Enrolment tab to begin](#)

#### How it works

- If online enrolment is supported by a child's local school, a link to begin an online enrolment application will be available via the "Enrolment" section of the school website.
- The parent or carer completing the application must provide the child's main residential address and a contact email to begin the online enrolment process.
- A one-time security code will be sent to this email to authenticate the parent against their email, then the online enrolment form can be completed and the parent can use this email address to resume at a later time.
- The dynamic form will only show the mandatory fields in relation to the specific student, which means parents will only be required to complete the fields of the application relevant to circumstances of their child.
- The form can take as little as 10 minutes to complete, and is sent directly to the school administration staff of your local school.
- Parents will be emailed a PDF copy of the enrolment application immediately following the submission for their own records.
- School administration staff can then contact parents directly for any clarification required around the application.
- The application to enrol will be finalised once the parent/carers has met with the school and provided all the relevant identity and medical documentation for the student.



#### STUDENT-CENTRIC

Online application form only asks questions relevant to the student.



#### USER-FRIENDLY

Form is intuitive, clear and progressed can be saved and resumed later



#### EASY ACCESS

Available through the school's website. Parents instantly know their in-area school.



#### SAFE & FLEXIBLE

The form is secure, and can be completed on multiple devices anywhere and anytime.



## APPENDIX B: UNIFORM ORDERS AND PRICING 2020

Order online at: <https://scarboroug-p.schools.nsw.gov.au/about-our-school/uniform>

### UNIFORM ORDERS AND PRICING 2020

Uniform Officer: Michael Webb

Contact: [michaelwebb2409@gmail.com](mailto:michaelwebb2409@gmail.com) or 0418 280 542

Location: Multi-purpose-room (downstairs), Wednesdays from 8.45 – 9.15am

Or fill out order form and send it to school office with full payment: cash, cheque or direct P&C bank payment receipt (No eftpos is available for uniforms).

Orders will be processed on the next Thursday and items sent home with your child. Cheques must be payable to Scarborough Public School P&C.

Orders can be placed online at <https://bit.ly/spsuniformshop>

**Bank details for online payments:**

Bank: CBA

BSB: 062-607

Account: 00900709 Scarborough PS P&C

Clothes available in size 4,6,8,10,12,14,16 unless stated otherwise

NAME: ..... CLASS: .....

PHONE: .....

Size	Item Description	Cost	Qty	Total cost
	Hats Bucket <i>XS, S, M, L</i>	\$15		
	Headband Tartan	\$6		
	Scrunchie Tartan	\$4.50		
	Red Logo Polo Shirt <i>Long sleeve</i>	\$24		
	Red Logo Polo Shirt <i>Short sleeve</i>	\$20		
	Boys Grey Trouser Cargo	\$24		
	Boys Grey Shorts Cargo	\$20		
	Girls Cullottes Tartan <i>Sizes 5-12</i>	\$28		
	<i>Sizes 14-16</i>	\$31		
	Girls Pinafore Tartan <i>Sizes 4-6</i>	\$36		
	<i>Sizes 7-8</i>	\$39		
	<i>Sizes 10 and up</i>	\$42		
	<b>NEW: Green Embroidered Logo Hoodie</b>	\$29		
	Green Fleecy V-Neck Sweatshirt <i>(being discontinued)</i>	\$20		
	Polar Fleece Jacket Full Zip Front	\$25		
	Polar Fleece Vest Full Zip Front <i>(being discontinued)</i>	\$19		
	Sports shirt	\$30		
	Sports shorts	\$16		
			<b>TOTAL ITEMS</b>	<b>TOTAL COST</b>
			\$	\$



## SCHOOL BAG ESSENTIALS



**WATER BOTTLE**



**HAT**



**HEALTHY LUNCHBOX  
WITH NUDE FOOD**



**SPARE CLOTHES**  
(SHIRT, PANTS, UNDERWEAR  
& SOCKS)

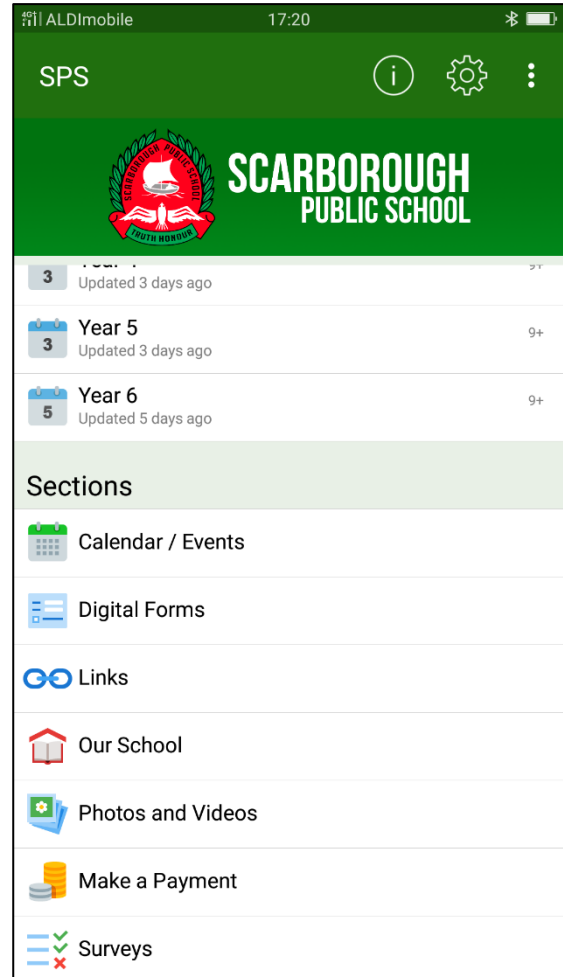
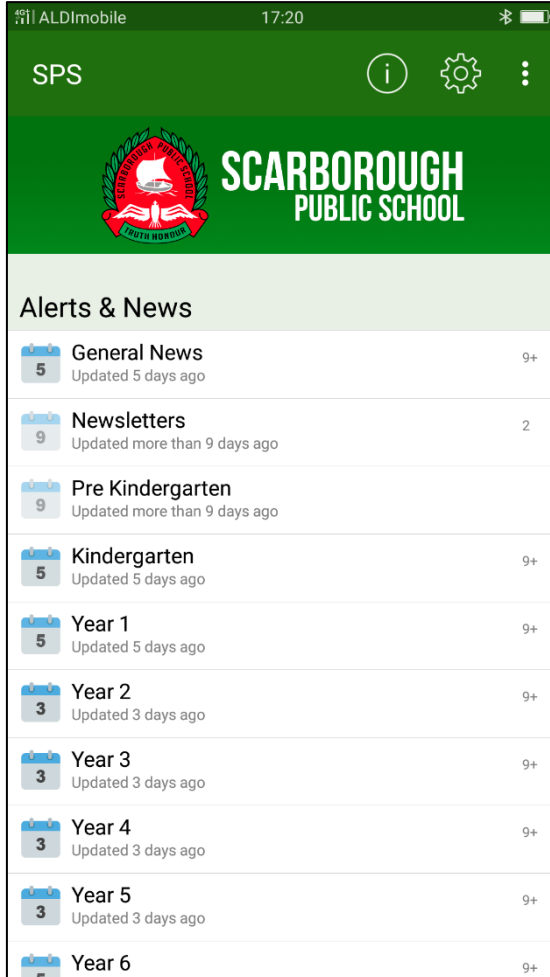


**LIBRARY BAG**  
(LIBRARY DAYS ONLY)



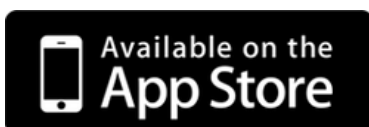


# DOWNLOAD THE SCARBOROUGH PUBLIC SCHOOL APP



## APP DOWNLOAD INSTRUCTIONS:

1. **iPhone & iPad:** Open the App Store on your device, search for your school name  
**Android:** Open the Play Store on your device, search for your school name  
**Windows Phone & Windows 8/10:** Open the Windows Store, search for your school name
2. Download your school app
3. Press the "Settings" (cog) icon to configure push notification alerts.





## APPENDIX 2: SAMPLE CANTEEN MENU



### CANTEEN 4 KIDS

SCARBOROUGH PUBLIC SCHOOL  
OPERATED BY THE SCARBOROUGH PUBLIC SCHOOL P&C

#### SUPER SANDWICHES

- vegemite sandwich / \$2
- jam sandwich (homemade, sugar-free) / \$2
- cheese sandwich / \$2.50
- ham sandwich / \$3
- chicken breast sandwich / \$4
- egg sandwich / \$3
- salad sandwich (lettuce, tomato, cucumber) / \$3



#### EXTRA FILLINGS & STYLES

- add **tomato, cucumber, lettuce, tomato** / 30 cents each
- add **cheese, avocado** / 50 cents each
- make it a **wrap** / 50 cents extra
- gluten-free** bread / 50 cents extra
- toasted** / 30 cents extra



#### SNACKS & DRINKS

- Air-popped popcorn / \$1
- 100% fruit juice popsicles
- crunch box (carrot, cucumber)
- 99.9% fruit juice poppers / \$1



ORDER ONLINE  
[bit.ly/spscan](http://bit.ly/spscan)  
by 4pm Wednesday

### MEAL DEALS

SCARBOROUGH PUBLIC SCHOOL  
OPERATED BY THE SCARBOROUGH PUBLIC SCHOOL P&C

Meal deals are held once a month and are themed around popular meals our students enjoy, including sushi, pizza, lasagna, burgers and pasta. Different dietary needs are catered for.



#### 2019 MEAL DEAL\* THURSDAYS

- Sushi / May 9
- Meatball Subs & Falafel / June 20
- Nachos / July 4
- Penne pasta / August 15
- Burgers / September 26
- Sushi / October 24
- Lasagne / November 21
- Pizza / December 19

#### CANTEEN MENU THURSDAYS

- May 23
- June 6
- August 1
- August 29
- September 12
- November 7
- December 5

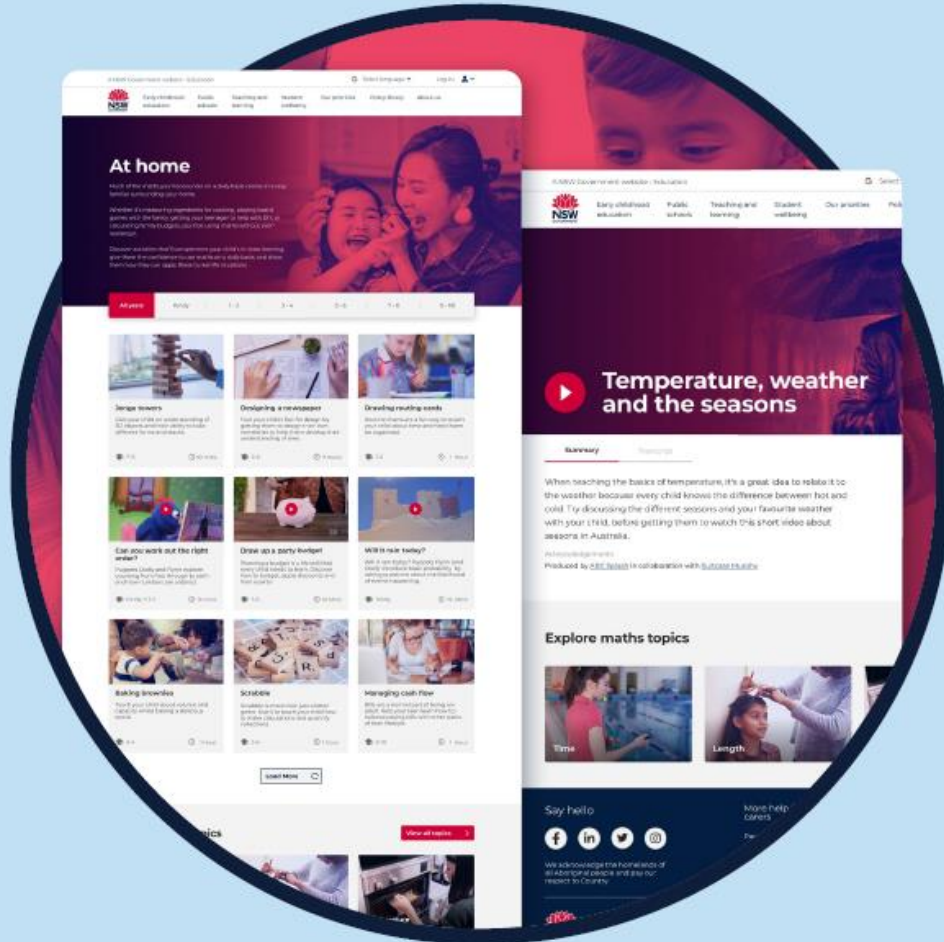
\*Recipes can be viewed on our school website

ORDER ONLINE:

[bit.ly/spsmealdeal](http://bit.ly/spsmealdeal)

by 4pm Wednesday





| NSW Department of Education

# Explore the **Everyday Maths Hub** >

It is easier for children to understand maths when they relate it to something real and see it as part of their everyday life. The Everyday Maths Hub is designed to support parents and carers to bring mathematics into their home, the outdoors and anywhere else their children learn and play.

You can find the Everyday Maths Hub at [education.nsw.gov.au/everyday-maths](https://education.nsw.gov.au/everyday-maths)







## WATCH OUR 2021 KINDERGARTEN WELCOME VIDEO

[bit.ly/spskinder21](https://bit.ly/spskinder21)



371-381 LAWRENCE HARGRAVE DRIVE, SCARBOROUGH NSW 2515 PH: 02 4267 2153

EMAIL: [SCARBOROUGH-P.SCHOOL@DET.NSW.EDU.AU](mailto:SCARBOROUGH-P.SCHOOL@DET.NSW.EDU.AU) WEBSITE: [WWW.SCARBOROUGH-P.SCHOOLS.NSW.GOV.AU](http://WWW.SCARBOROUGH-P.SCHOOLS.NSW.GOV.AU)



[WWW.FACEBOOK.COM/SCARBOROUGHPUBLICSCHOOL](http://WWW.FACEBOOK.COM/SCARBOROUGHPUBLICSCHOOL)